

Release Notes

PayrollPlus version 1.7.0.19



Release Date

January 30, 2017

Technical Specifications

Software Version: 1.7.0.19

Database Version: 3.0

Requirements

Minimum Requirements

Hardware

CPU: Inter Core i3 or equivalent

Memory: 2 GB

Storage: 300 MB

Display Resolution: 1366 x 768

Network Interface: Ethernet 10 Mbit or
WiFi adapter

Software

Operating System: Window 7 SP1 or later

Framework: .NET 4.5 or later

Recommender Requirements

Hardware

CPU: Inter Core i3 or equivalent

Memory: 4 GB

Storage: 1 GB

Display Resolution: 1920 x 1080

Network Interface: Ethernet 1000 Mbit or
WiFi adapter

Software

Operating System: Window 7 SP1 or later

Framework: .NET 4.5 or later

Database

PostgreSQL version 9.4.

Other Requirements

If you are upgrading the software to version 1.7.0.19, PayrollPlus version 1.6.0.7 is required. Previous updates are not included in this update.


Release Features

PayrollPlus new features increase the capabilities of the software allowing the user to be more productive, to have more control on the payroll process and to gain more decisional tools and outputs for the administration of the company.

Switch between companies

Logged in the software user can now switch between the companies simply with the pressing of a button.

Before this release, a user who wanted to login to another company had to close PayrollPlus, run the software again, login, and finally select the company to open.

Now, only by pressing the  button on the Quick Access Menu the user can switch between companies easily.

Interface with popular accounting software

Interface with QuickBooks is now available. PayrollPlus exports .IIF file with a General Journal with your payroll entries. Export feature makes your life easier and eliminates human errors.

Reporting

Several new reports are now available as shown below.

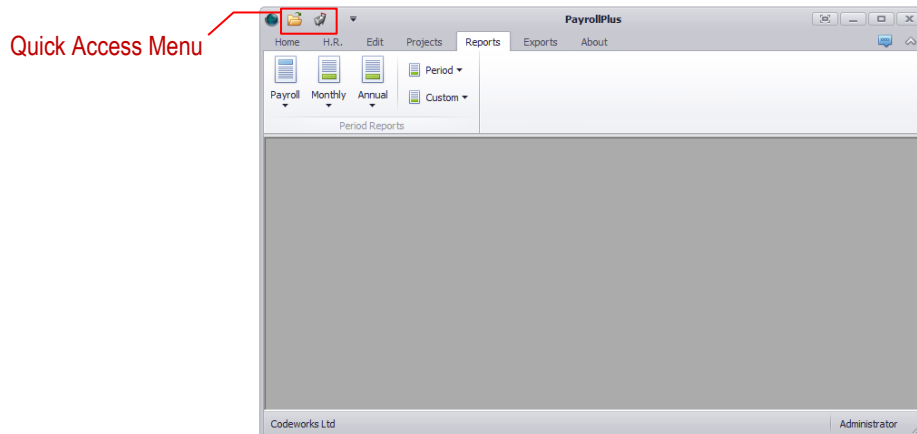
Report	Category
<i>Payroll Provident Fund</i>	<i>Payroll information</i>
<i>Medical Fund</i>	<i>Payroll information</i>
<i>Additional Salaries Provision</i>	<i>Payroll information</i>
<i>Unions Contributions</i>	<i>Monthly totals</i>
<i>Unions Stamps</i>	<i>Monthly totals</i>
<i>Unions Medical Fund</i>	<i>Monthly totals</i>
<i>Unions Provident Fund</i>	<i>Monthly totals</i>

Enhancements


PayrollPlus features has been enhanced with better performance, enriched new reports and functionalities.

Quick Access Menu

A new menu is now available and can be accessed easily whatever you do in the software. This menu is located on the top left corner of PayrollPlus window.



Accessing Software Credits easily

Accessing software credits can now be done simply by pressing the  button on the Quick Access Menu.

Provident Fund calculation on TD59

Provident Fund annual amount had been calculated on all payrolls, including 13th, 14th, or other payrolls. This is now controlled by a parameter.

Payroll Payslip Reports

Payslips now are printed sorted by the Employee ID.

Fixes

Due the new features and functionalities required to be implemented in PayrollPlus, from time to time we face some issues that need to be fixed. This is an unpleasant case for us and our clients and we always do our best to solve all issues that might raise as soon as possible.

Monthly Social Benefits Report

New employments (Section C) was not showing the employment date. Fixed.

TD63 Report

When trying to print the report, selecting employees screen was showing employees from other companies. Fixed.

Special Contribution

Special Contribution ended 31/12/2016. This calculation is done to that day and after that no deduction should be done. However, this calculation would be performed on 13th salary of 2017 also. This is now fixed.

Known Issues and Problems

We always want to solve issues raised in PayrollPlus before releasing a PayrollPlus Update. However, in order to give solutions as fast as possible, we sometime release updates before fixing all known issues. Yet, we still want to let you know for those issues and minimize the way the issue affects you.

No known issues

Upcoming Features

There is always something new that we are working on, and we would like to let you know about what to expect in the near future.

Interface with popular accounting software

We are implementing interfaces with accounting software to make your life easier. There is many accounting software available in the market and as new customers request implementation of interface with the accounting software they use, we develop accounting interfaces from time to time.

Employees Trainings

Trainings and certificates of the employees with scanned images, scores and evaluation.

Reporting

Reports that are available in the software are enriched and prepared based to the needs of the clients. New reports are developed and getting available on every software update.